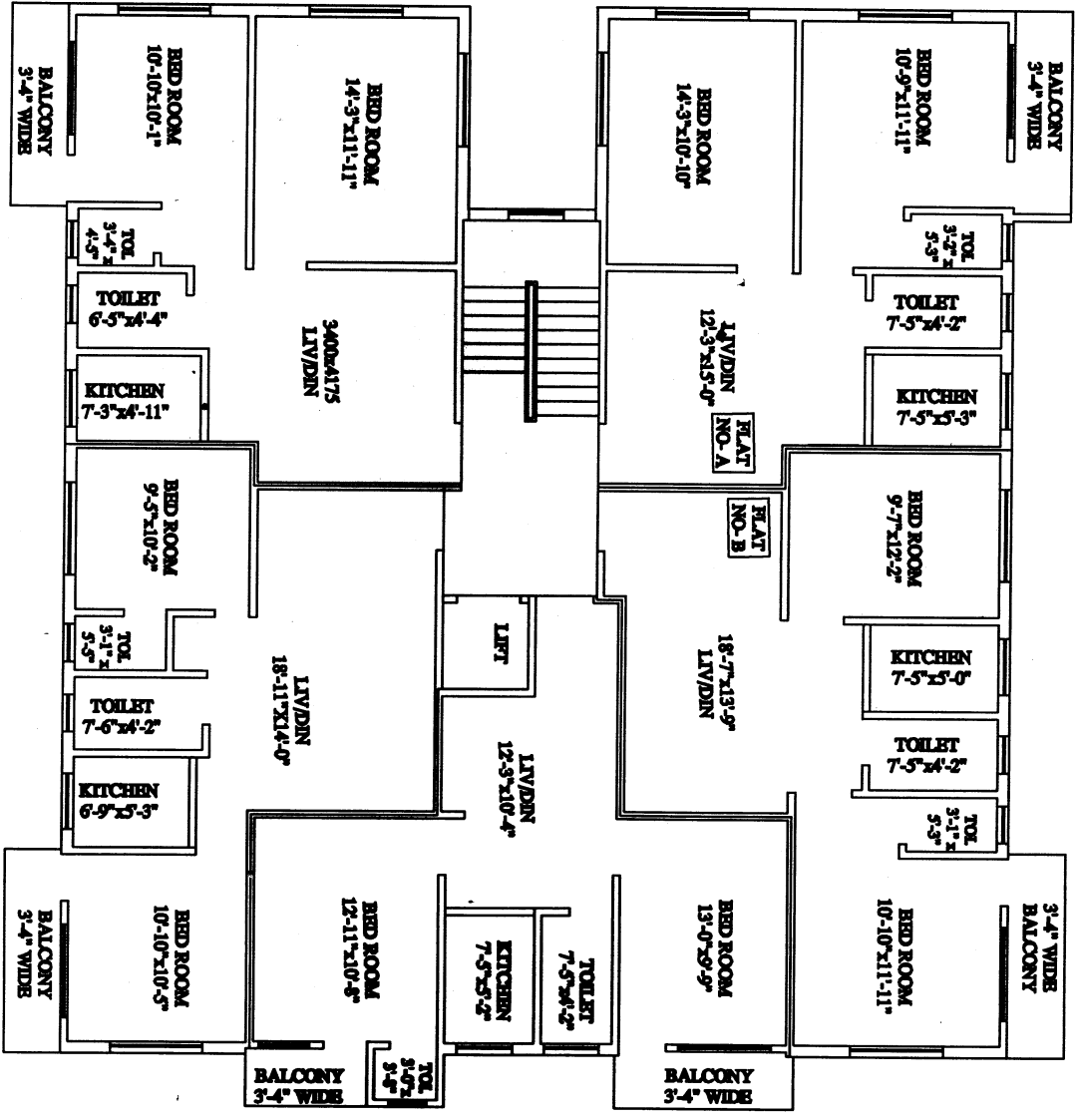


6 M. WIDE PASSAGE OF PROJECT



3.5 M. WIDE PASSAGE OF PROJECT

4TH. FLOOR (BLOCK-E)

1.5 M. WIDE OPEN SPACE OF PROJECT

9-5-16
 22
 28-6-16
 29-6-16

PROPOSED EASEMENT/RIGHT OF WAY PLAN
 UNDER S. D.A.C. NO. 2015.6616/24.1525
 R.S. KHATTAN NO. 4487/R.D.A.C. NO. 6609
 6612, 6685, 6586, L.R. KHATTAN NO. 136, 148, 211, 5606
 M.O.T.A. : KOTRINGALI, NO. 8
 COMPRISING MUNICIPAL HOLDING NO. 6
 BAIDAK PARANGA CLANE
 UNDER TEANPARA-KOTRING
 MUNICIPALITY, P.S. - OTTARPARA
 DIST. - HOOGHLY, W.B.

Chairman-in-Council
 Utra-para-kotru
 Municipality